

THE BULLHORN

March 2018

This is where the Cowboy rides away

“They just don’t make ‘em like they used to!” That familiar saying holds true to the likes of retiring All West salesman Arden VanPeursesem. Born and raised on a dairy farm in Iowa, Arden loved cows and he loved horses. Both grandfathers were avid horsemen, and Arden spent many summers working with them and learning horsemanship skills. He took over the home dairy in 1970 after getting married and serving in the Army, but then the cows had to be sold, and Arden and his new bride had to embark on the next chapter of life.

Arden had always been interested in genetics, and in fact, while attending a satellite program of Iowa State, he helped with data collection when Dr. Sims was developing and introducing the Calving Ease trait. “He developed the concept of calving ease before people even thought of it,” exclaimed Arden. So this love of genetics led the VanPeursems to a job opening in southern California with ABS. During those 14 years of selling semen, Arden met and

worked with Jim Wells, now the CEO of All West/Select Sires.

After 14 years with ABS, Arden had the chance to buy into a 3500-cow dairy near San Jacinto, which he managed for ten years. The dairy closed and Arden was once again faced with the question of “Now what?” Jim, now with All West, contacted Arden and offered him a job. “I knew Jim and trusted him. The timing was perfect and I didn’t hesitate to get on board with All West at all!” That was in 2003, and 550,000 units of semen later, Arden is writing the final pages of his semen selling career with Jim and the rest of the All West family.

“I’ve seen a lot of changes over my career. The migration of dairies out of southern California has had a big impact on me and all of the ag infrastructure here. But it’s been more than that. Dairies used to be smaller and guys knew their cows better. It used to be such a personal business. When bull buyers came out, they wanted to walk the pens and talk about the cows. I know that genomics have changed and made our information quicker, but I have to admit I miss those days when dairying was personal.”



“I’ll miss the relationships I’ve built in this career, but many of my dairymen still have kids showing at the fair and I’ll be there to cheer them on as always! It made my job easier when I was working every day with dairymen I consider to be great friends.”

(Continued next page)

CHANGES IN GENETIC EVALUATIONS

* Information about the upcoming genetic evaluation changes for April 2018 has been released by CDCB (Council for Dairy Cattle Breeding)

New health evaluations for Holsteins officially released (*Gaddis, Megonigal, Walton, Norman, Cole, VanRaden*)

Official genetic and genomic evaluations for resistance to six health events in Holsteins (Hypocalcemia, Displaced abomasum, Ketosis, Mastitis, Metritis, Retained placenta) will be first published in April 2018. These traits are six of the most common and costly health events impacting dairy herds. Positive predicted transmitting abilities (PTAs) measure resistance to these health disorders. For example, a mastitis PTA of +3 indicates that 3% fewer daughters will get mastitis during each lactation. Data from herds all over the country are included in April. These traits are not yet included in the lifetime net merit (NM\$) formula.

All-breed system extended to genomic evaluations (*VanRaden, Fok, Tooker, Bacheller, Megonigal, Walton*)

The all-breed system used for traditional evaluations since 2007 is now also applied for genomic evaluations starting April 2018. Relatives, regardless of breed composition, will now contribute to every animal’s parent average and its genomic evaluation. Genomic evaluations are now calculated on an all-breed base and then are converted to within-breed genetic bases for release to the dairy industry. **It is important to underline that crossbred animals will still not receive an evaluation.**

Productive Life (PL) correction (*VanRaden, Fok, Tooker*)

The multiple-trait Productive Life (PL) processing for incoming Interbull data has been completely revised to prevent the emergency actions taken in April and August 2017. The new system no longer tries to forward the differences between single and multiple-trait PL from one generation to the next. This logic tended to inflate the resulting evaluation, affecting primarily foreign bulls. Since foreign bull evaluations were inflated, SNP effects used to estimate genomic evaluations were affected, extending the inflation to the general population (e.g., including domestic animals).

*See the March issue of DiamondCuts e-news for more proof information: <http://www.allwestselectsires.com/diamond-cuts-news-letter/>

Every Step Counts

When the belts are tightened and the expenses are carefully scrutinized, producers are once again acutely aware that every bit of attention to detail is important to stay profitable. Your investment in genetics starts the second a live calf hits the ground. We've talked earlier about "protecting your investment" with our very popular line of Calf-Tel calf hutches (*see November 2017 DiamondCuts issue online at www.allwestselectsires.com*), but did you also know we have a Build A Better Heifer™ product line from Accelerated Genetics? The popular line includes colostrum replacer, milk replacer, electrolytes, and much more. A few of the Build A Better Heifer products are detailed in short videos done by our Federation Member, East Central/Select Sires. You can see videos posted on Accellyte Calf Electrolytes, Tri-Purify for scours, and Tri-Start Jr. direct-fed microbials at www.youtube.com (search the East Central/Select Sires channel).

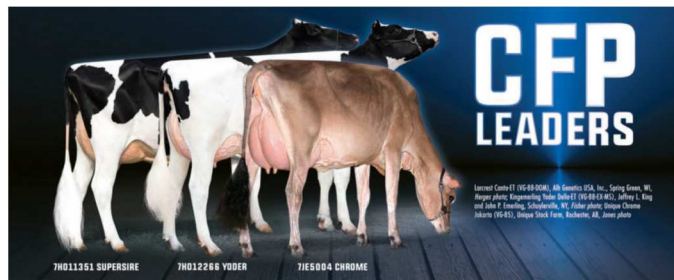
While treating calves with the "extras" may seem like just an added expense, it's actually a reliable way to safe-guard your investment. Why not let the genetics you've used reach their full potential in healthy, well-grown calves? Your milking pens in two years will reflect it!

Component Check

One other factor to consider during these economic times is to make the most of the milk you produce. And that simply means, raising the level of components that you produce. Cornell University recently addressed this within a story talking about key herd management opportunities during tough times. They quoted that "top-tier herds in the monthly Dairy Profit Monitor benchmarking program are producing a combined total of 6.5lbs./day per cow or more of fat and true protein, with a solid goal across herds of greater than 6.0lbs./day per cow."

Fat and protein levels continue to be a major driver in the price of milk and component bonuses, so why not do everything you can to improve those levels?

With new sire summaries being released the first week of April, why not check out the Combined Fat & Protein stars of the All West lineups? New proof & price lists will be available by Thursday, April 5th. Contact your All West rep or the Burlington or Turlock offices for the newest component information.



This is where the Cowboy... cont.

What's next for Arden? He and his wife, Johanne, are celebrating their 49th wedding anniversary in April with a cruise down the Rhine River, and he'll also be spending time in Iowa attending a horse sale. "I plan to buy a pair of driving ponies for my grandkids...I've got a couple of teams picked out already!"



All six of the VanPeursem grandchildren live within seven miles of Arden, so practicing their jumping and driving skills is a given. Arden also competes in cattle sorting with his own horses, so he'll be doing more of that as well.

An industry that's seen a lot of changes over the years provided one constant source of friendships and opportunities. As the April 1st retirement date approaches, all of us at All West would like to say "Thank you, Arden!" for your many years of service and your love of great genetics!



Find us online!



Headquarters: P.O. Box 507 | Burlington, WA 98233
CA Office: P.O. Box 1803 | Turlock, CA 95381
www.allwestselectsires.com | contact@allwestselectsires.com
800.426.2697 | Bullhorn.feedback.karenk@allwestselectsires.com