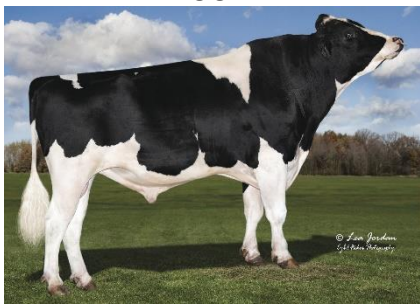


# The Bullhorn

your monthly cooperative update  
**SEPTEMBER 2019**

## **AUGUST 2019 SIRE SUMMARY RESULTS**

With the release of a terrific sire summary this month, Select Sires continues to offer the most dominant lineup of dairy sires in the industry and combines elite genetics with valuable fertility. This offering allows us to better serve you, our customer-owners, with outstanding genetics, as well as the programs, products and services that help you achieve success!



### **Proven Holstein Lineup:**

Select Sires dominates the Top 100 TPI Proven Sire list with 19 of the top 50 and 39 of the top 100 in the industry. Three of the top four proven sires on the Top 100 TPI List are at Select Sires with 14HO7770 HELIX (+2811 GTPI), 250HO13267 DUKE (+2758 GTPI) and FRAZZLED (+2731 GTPI)! Select Sires also dominates the 97% Reliability list with 25 of the top 50 and 49 of the top 100 sires.

← 14HO7770 HELIX



### **Holstein Active Sires**

We continue our contribution to elite Holstein females with 273 of the top 500 GTPI and 192 of the top 500 NM\$ heifers sired by a Select Sires bull, led by 7HO14250 LEGACY→ —the top sire of elite tested females in the breed!

*LEGACY is a NxGEN program sire.*

*To learn more about the membership program, visit [www.selectsires.com](http://www.selectsires.com) → Programs → NxGEN*



- With the August sire summary, Select Sires expanded our lead as the industry leader for proven NM\$ sires with three in the top 10, nine of the top 25, and 17 of the top 50 Holstein sires. HELIX (+978 NM\$) and FRAZZLED (+970 NM\$) lead the way, ranking in the top five among proven sires for NM\$.
- Select Sires has four of the top 10 active proven sires for DWP\$, led by FRAZZLED, the breed leader for this Wellness index at +1,158 DWP\$.
- Select Sires has 12 of the top 30 proven sires for CM\$, led by HELIX (+998 CM\$).
- Select Sires leads the proven sire list for PTA Milk with eight of the top 25 proven sires, led by DUKE (+2,798M), 14HO7489 HOMER (+2,557M) and 7HO13250 JEDI (+2,631M), who rank in the top 10.
- We also offer the most proven sires at or above +120 pounds of CFP with 47 sires, including nine of the top 25, led by DUKE (+229 CFP) and HELIX (+213 CFP), who are the top two proven sires for CFP in the breed.

### **Holstein Young Sires**

- With the August 2019 combined proven and genomic young sire lineups, we offer 110 Holstein sires with elite genetic levels that are also at or above +1.0 for SCR.
- There is a total of 53 active Holstein sires that exceed +900 NM\$ and are also at or over +1.0 SCR, and 13 of these available sires for elite NM\$ and SCR are offered by Select Sires.
- There are only 58 Holstein sires in active A.I. that meet or exceed +2700 GTPI and +1.0 for SCR, and 19 of these are available from Select Sires!
- 7HO14320 ALPHABET (+981 NM\$, +2826 GTPI, +2.5 SCR), 14HO7923 DOCTOR (+949 NM\$, +2839 GTPI, +2.8 SCR) and 7HO14319 FORTE (+970 NM\$, +2833 GTPI, +2.9 SCR) are all breed leaders for combining elite genetic levels with high fertility.

## New Holstein Sires

Fourteen elite new Holstein graduates were added to the lineup in August 2019.

- Three of the new sires rank in the top 15 on Holstein USA's, Top 100 TPI® proven sire list; 7HO12788 FRAZZLED (+2731 GTPI), 14HO7811 RENOWN (+2672 GTPI) and 7HO12819 OUTSIDERS (+2669 GTPI).
- Nine of the new sires are over +750 NM\$, led by FRAZZLED (+970 NM\$), OUTSIDERS (+861 NM\$) and 7HO12837 ZAMBONI (+813 NM\$).
- Four of the new proven sires rank in the breed's top-27 for DWP\$®; FRAZZLED (+1,159 DWP\$), 7HO13326 WINSTON (+923 DWP\$), RENOWN (+877 DWP\$) and 7HO12801 SUMO (+873 DWP\$).
- Seven of the new sires are over +130 for Combined Fat and Protein (CFP); led by FRAZZLED (+165 CFP) and OUTSIDERS (+157 CFP). Five of the new sires are over +2,000 PTA Milk, led by 7HO12830 SANDERSON, who enters the active proven ranks as a top-20 milk sire at +2,506 PTAM.

## Fertility Without Compromise

Select Sires continues to be the source for the broadest and best genetic selection of sires that excel in fertility in both conventional and gender SELECTed™ semen. Our combined list of active Holstein proven and young sires includes 110 sires at or over +1.0 for SCR and 53 sires at or over +2.0 SCR, which is nearly double any other source.

No other stud provides a broader selection of high-fertility genetics than Select Sires!

## The Jersey Revolution

Select Sires offers the most elite Jersey proven and genomic young sires for Jersey Performance Index™ (JPI™), NM\$, CM\$, CFP, Type and Jersey Udder Index™ (JUI™), regardless of generation count.

Select Sires leads the industry with four of the top five and eight of the top 15 active proven and young sire Jerseys for JPI. Leading this listing are 507JE1758 JX THRASHER {6} (+201 JPI), 7JE5041 JX TRIUMPH {5} (+198 JPI) and 7JE1722 JX DASHIELL {6} (+196 JPI). On the combined active Jersey proven and genomic young sires list, Select Sires offers 17 of the top-25 sires for SCR!

Visit [www.allwestselectsires.com/dairy-2](http://www.allwestselectsires.com/dairy-2) to view the August 2019 Sire Directories and more proof information!

## PRODUCT PANTRY SPECIALS!

**CONVERT DAY-ONE CALF GEL**  
SPECIAL BUY 16 • GET 2 FREE  
SEPTEMBER 1 TO OCTOBER 31, 2019  
\*Promo only valid on 15cc tubes

**CONVENIENT & BIOSECURE**

**BioCycle PLUS**  
SPECIAL BUY 5 • GET 1 FREE  
SEPTEMBER 1 TO OCTOBER 31, 2019

**Agriarian SOLUTIONS**  
www.agriariansolutions.com

**SELECT Sires**  
YOUR SUCCESS Our Passion  
Phone: (814) 622-1882 | www.selectsires.com

**Convert Day-One Calf Gel** is now available in single dose 15CC tubes!

Even better? These convenient and biosecure tubes are on special from Sept. 1 – Oct. 31: **Buy 16 tubes, Get 2 FREE!**

Help your newborn calves fight off scours-causing pathogens with Convert Day-One Calf Gel, now available in single-dose 15CC tubes!

**Select BioCycle PLUS** is also on special from Sept. 1 – Oct. 31: **Buy 5, Get 1 FREE!**

This excellent direct-fed microbial is formulated to aid in modulating immune function, digestion and resisting everyday environmental challenges. It can help to maintain active heats, breeding performance, steady milk production and assist during heat stress.

*Contact us today to put these products in your pantry!*



## Contact us!

800.426.2697  
www.allwestselectsires.com  
contact@allwestselectsires.com

Bullhorn feedback to  
mackenzieg@allwestselectsires.com

## Follow us!



Headquarters: P.O. Box 507 | Burlington, WA 98233  
CA Office: P.O. Box 1803 | Turlock, CA 95381